



AdminStudio Repackager 10.0

Installation Guide

Repackager 10.0 Installation Guide

Part Number: RPG-1000-IG00
Product Release Date: February 22, 2011

Copyright Notice

Copyright © 2001–2011 Flexera Software, Inc. and/or InstallShield Co. Inc. All Rights Reserved.

This product contains proprietary and confidential technology, information and creative works owned by Flexera Software, Inc. and/or InstallShield Co. Inc. and their respective licensors, if any. Any use, copying, publication, distribution, display, modification, or transmission of such technology in whole or in part in any form or by any means without the prior express written permission of Flexera Software, Inc. and/or InstallShield Co. Inc. is strictly prohibited. Except where expressly provided by Flexera Software, Inc. and/or InstallShield Co. Inc. in writing, possession of this technology shall not be construed to confer any license or rights under any Flexera Software, Inc. and/or InstallShield Co. Inc. intellectual property rights, whether by estoppel, implication, or otherwise.

All copies of the technology and related information, if allowed by Flexera Software, Inc. and/or InstallShield Co. Inc., must display this notice of copyright and ownership in full.

Trademarks

Flexera Software, AdminStudio, FlexEnabled, FLEXIm, FlexNet, FlexCertified, FlexNet Connect, FlexNet Connector, FlexNet Manager, FlexNet Publisher, Globetrotter, InstallShield, InstallShield Developer, InstallShield DevStudio, InstallShield Professional, and Package For The Web are registered trademarks or trademarks of Flexera Software, Inc. and/or InstallShield Co. Inc. in the United States of America and/or other countries. All other brand and product names mentioned herein are the trademarks and registered trademarks of their respective owners.

Restricted Rights Legend

The software and documentation are “commercial items,” as that term is defined at 48 C.F.R. §2.101, consisting of “commercial computer software” and “commercial computer software documentation,” as such terms are used in 48 C.F.R. §12.212 or 48 C.F.R. §227.2702, as applicable. Consistent with 48 C.F.R. §12.212 or 48 C.F.R. §227.2702-1 through 227.7202-4, as applicable, the commercial computer software and commercial computer software documentation are being licensed to U.S. government end users (A) only as commercial items and (B) with only those rights as are granted to all other end users pursuant to the terms and conditions set forth in the Flexera Software, Inc. standard commercial agreement for this software. Unpublished rights reserved under the copyright laws of the United States of America.

Contents

Installing Repackager	5
System Requirements	5
Repackager Installation Best Practices	6
Installing and Configuring Repackager to Ensure Optimal Installation Capture	7
Launching Repackager Remotely	8
Installing Repackager on a Clean Machine	10
Additional Configuration Steps	15
Alternate-Language Repackaging on Clean Machines	15
Including the InstallScript Engine With a Windows Installer Package	15
Index	17

Contents

Installing Repackager

This chapter details Repackager system requirements, Repackager installation best practices, and how to install and configure Repackager to ensure optimal installation capture:

- [System Requirements](#)
- [Repackager Installation Best Practices](#)
- [Installing and Configuring Repackager to Ensure Optimal Installation Capture](#)
- [Additional Configuration Steps](#)

System Requirements

The recommended system configuration for a machine running Repackager 10.0 is:

Table 1 • Repackager 10.0 Machine Requirements

Category	Description
Processor	32-bit (x86) or 64-bit (x64) processor at 1 GHz or greater
RAM	1 GB
Hard Disk	1.1 GB
Display	Designed for XGA at 1024 x 768 resolution or higher
Operating System	Windows 7, Windows Vista, Windows XP (SP1 or later is recommended), or Windows Server 2003 or later. Predeployment Test and Configuration Manager Web Console require Microsoft IIS 5 or later.
Browser	Microsoft Internet Explorer 5.5 or later
Privileges	Administrative privileges on the system

Repackager Installation Best Practices

When installing Repackager, consider the following:

- [Repackage on a Clean System](#)
- [Launch Repackager Remotely or Install Repackager on the Clean Machine](#)
- [Store Repackaged Files on a Network Location](#)

Repackage on a Clean System

It is essential that you repackage applications on a “clean” system to ensure you capture all changes made by the installation. A clean system typically consists of a computer with only the operating system and necessary service packs installed on it. Repackaging on a clean system provides the following benefits:

- **Prevents you from capturing Repackager files**—By repackaging on a clean system, you are ensuring that you do not inadvertently capture Repackager files during repackaging.
- **Ensures that you capture all of the necessary setup files**—If you do not repackage on a clean system, you may not capture all of the necessary files for the setup because the files may already be installed on the system.

Launch Repackager Remotely or Install Repackager on the Clean Machine

Because it is best to keep the number of packages installed on the clean machine to a minimum, you should launch Repackager remotely from the clean machine or install Repackager on the clean machine:

- **Launch Repackager Remotely**—You could install Repackager on a shared network drive and then launch Repackager remotely from the clean machine. See [Launching Repackager Remotely](#).
- **Install Repackager on clean machine**—You could install a copy of Repackager onto the clean machine. While it is preferable to launch Repackager remotely from the clean machine, if you do not have network access to an installation of the AdminStudio client tools, this is your best option. See [Installing Repackager on a Clean Machine](#).

Both of these options are explained in [Installing and Configuring Repackager to Ensure Optimal Installation Capture](#).

Store Repackaged Files on a Network Location

When using the Repackaging Wizard, you should save Repackager output to a network location, not to a location on the clean machine (unless you do not have network connectivity).

On the **Set Target Project Information and Capture Settings** panel of the Repackaging Wizard, set the **Project path to store files** field to a network location.

Installing and Configuring Repackager to Ensure Optimal Installation Capture

Both repackaging methods, **Installation Monitoring** and **Snapshot**, involve installing an application and recording the system changes made by that installation. To ensure that you capture *all* changes made by the installation, you should, ideally, install the application onto a “clean machine” (a computer with only the operating system installed), as described in [Repackager Installation Best Practices](#).

Depending upon your network connectivity, you should install and configure Repackager on a clean machine in one of the following ways:

Table 2 • Methods to Configure Repackager

Repackager Configuration	Description
Launching Repackager Remotely	If you have connectivity from a clean machine to a computer or network location that contains an installation of Repackager, you should launch Repackager remotely.
Installing Repackager on a Clean Machine	If you do not have any network connectivity on the clean machine, you should install Repackager on the clean machine.



Note • You cannot repackager remotely from a Windows NT4 system because a file required during repackaging on that operating system, *MSCVRT.dll*, must be installed locally. Therefore, when repackaging on a Windows NT4 system, install Standalone Repackager on that machine, as described in [Installing Repackager on a Clean Machine](#).

Launching Repackager Remotely

Because you want to avoid installing applications on the clean machine, you should launch Repackager remotely from the clean machine.

To launch Repackager remotely, perform the following tasks:

- [Sharing Directories on a Machine with an Installation of AdminStudio](#)
- [Creating a Shortcut to Repackager on the Clean Machine](#)
- [Launching Remote Repackager on the Clean Machine](#)

Sharing Directories on a Machine with an Installation of AdminStudio

To share directories on a machine where AdminStudio is installed, perform the following steps:



Task: *To share the Repackager and AdminStudio Shared folders:*

1. Locate a production machine with network access that has AdminStudio installed on it.



Tip • *Check to make sure that this installation of AdminStudio has already been activated before proceeding.*

2. Open Windows Explorer and locate the following directory:
C:\Program Files\AdminStudio\10.0\Repackager
3. Right-click the Repackager directory and then click **Sharing and Security**. The **Sharing** tab of the **Repackager Properties** dialog box opens.
4. Select **Share this folder** and configure sharing rights as necessary.
5. Click **OK** to close the dialog box.
6. Repeat the steps above to also share the AdminStudio Shared directory used by that installation of AdminStudio.

Creating a Shortcut to Repackager on the Clean Machine

To create a shortcut to Repackager on the clean machine, perform the following steps:



Task: *To create a shortcut to Repackager on the clean machine:*

1. On this clean machine with network access, launch Windows Explorer.
2. Select **Map Network Drive** from the **Tools** menu. The **Map Network Drive** dialog box opens.
3. Specify the drive letter you want use to represent the shared location.
4. Click **Browse**. The **Browse for Folder** dialog box opens.

5. Select the shared Repackager directory on the production machine (that you configured in [Sharing Directories on a Machine with an Installation of AdminStudio](#)) and click OK.
6. Click **Finish** to exit the **Map Network Drive** dialog box.
7. From Windows Explorer, navigate to the drive mapped to the shared Repackager directory on the production machine.
8. Right-click on the `is1c.exe` file (the Repackager executable file), point to **Send To**, and click **Desktop (create shortcut)**. A shortcut to Repackager in the shared directory is now on the Desktop.

Launching Remote Repackager on the Clean Machine

To launch Repackager on the clean machine, perform the following steps:



Task: *To launch Remote Repackager on the clean machine:*

1. On the clean machine, double-click the **Repackager** shortcut on the desktop (that you created in [Creating a Shortcut to Repackager on the Clean Machine](#)). The Repackager Start Page opens.



Important • *Because you are running Repackager remotely, the online help topics cannot be viewed. However, you can view a version of AdminStudio Help Library online at:*

<http://helpnet.flexerasoftware.com>

2. Click the **Capture an Installation Using Repackaging Wizard** link. The **Welcome** panel of the **Repackaging Wizard** opens.
3. Continue using the Repackaging Wizard to capture a legacy setup.



Caution • *On the **Set Target Project Information and Capture Settings** panel of the Repackaging Wizard, do not set the **Project path to store files** field to a location on the clean machine; instead choose a network location.*

Installing Repackager on a Clean Machine

It is essential that you repackage applications on a “clean” system to ensure you capture all changes made by the installation. A clean system typically consists of a computer with only the operating system and necessary service packs installed on it. It is the baseline system that the computer requires to run.

While you want to avoid installing applications on the clean machine, if the clean machine does not have network connectivity to an installation of Repackager (which is required in order to run Repackager remotely), you have to install Repackager locally on a clean machine by running the Repackager installation.

To install a standalone version of Repackager on a clean machine, perform the following steps.

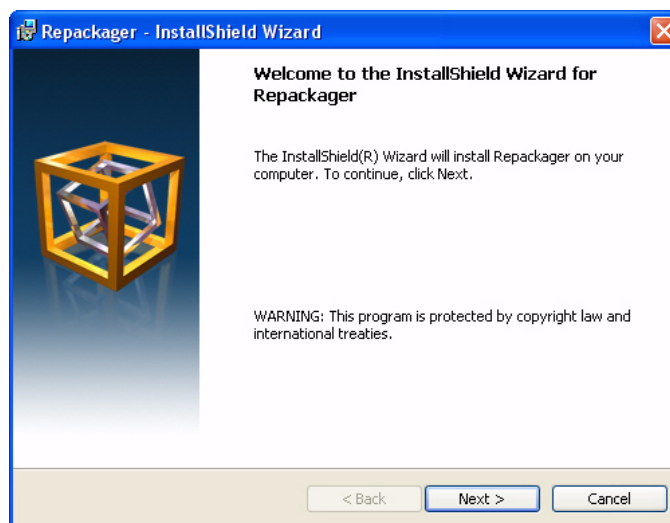


Note • You cannot install Repackager on a machine that already has a copy of Repackager installed.

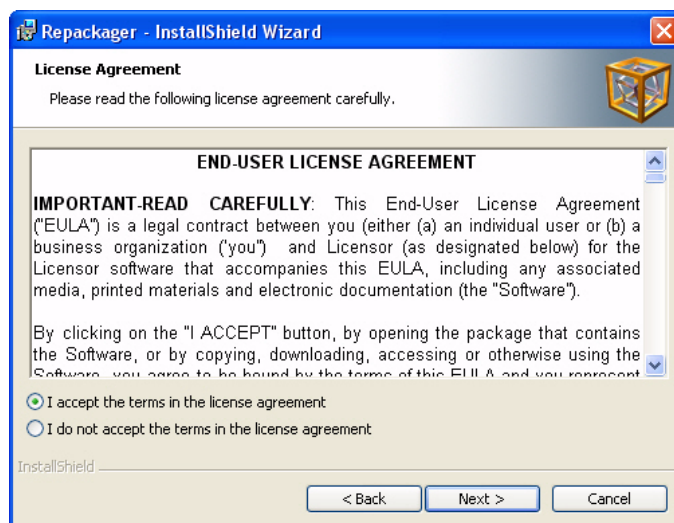


Task: *To install Repackager on a clean machine:*

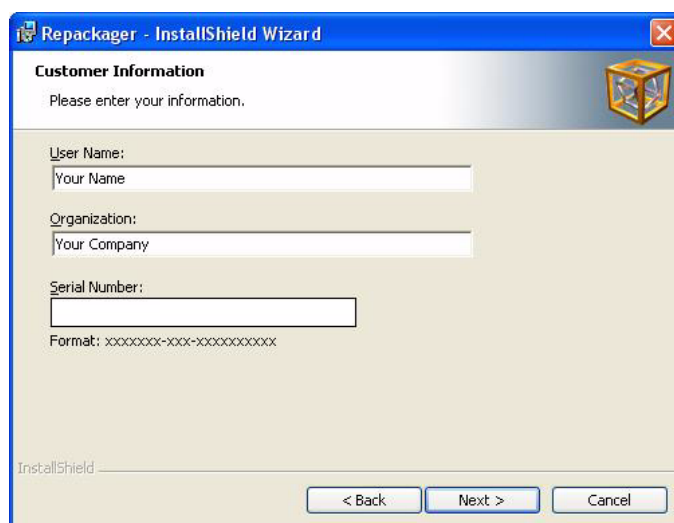
1. Build a “clean machine”—a computer with only the operating system and necessary service packs installed on it.
2. Open the AdminStudio installation CD and locate the standalone Repackager installation in the Tools directory:
`\Tools\StandaloneRepackager.exe`
3. Copy `StandaloneRepackager.exe` to the clean machine.
4. Launch the setup. The **Welcome Panel** opens.



5. Click **Next**. The **License Agreement** panel opens.



6. Select the **I accept the terms of the license agreement** option and click **Next**. The **Customer Information** panel opens.

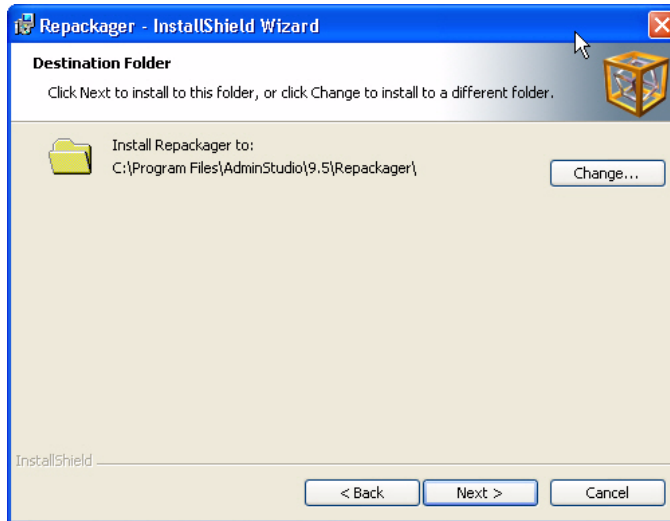


7. Enter a **User Name** and **Organization** name to identify this installation of Repackager.
8. Enter the **Serial Number** you received for the Edition of AdminStudio that you purchased.

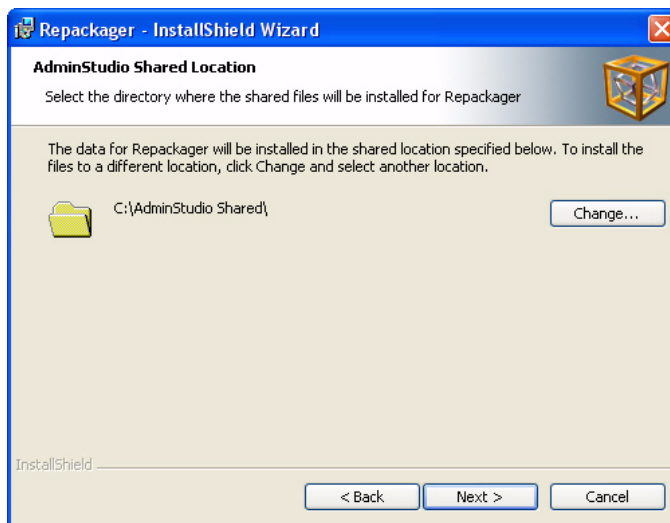
Installing Repackager

Installing and Configuring Repackager to Ensure Optimal Installation Capture

9. Click **Next**. The **Destination Folder** panel opens.



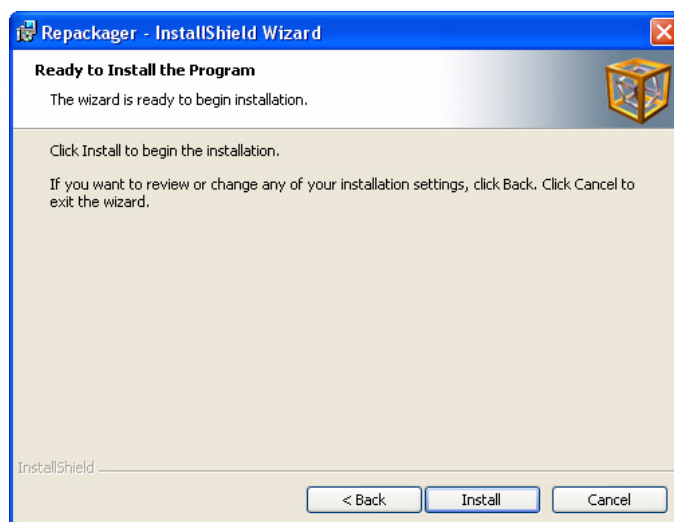
10. If you want to install Repackager in the specified directory, click **Next**. If you want to select a different directory, click **Change**, select a new directory, and then click **Next**. The **AdminStudio Shared Location** panel opens.



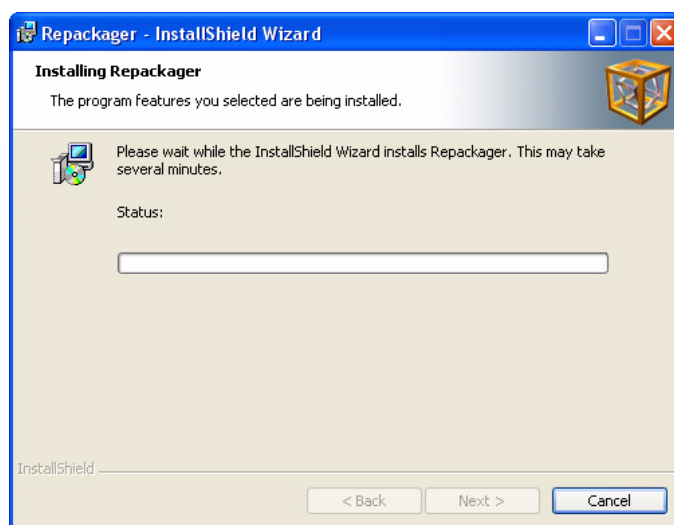
The AdminStudio Shared directory contains shared information for repackaging and conflict identification, and other AdminStudio functions. With regard to Repackager, the AdminStudio Shared directory contains the following:

- Repackager isrepackager.ini exclusion list

11. Specify the location of your organization's AdminStudio Shared directory, and click **Next**. The **Ready to Install** panel opens.



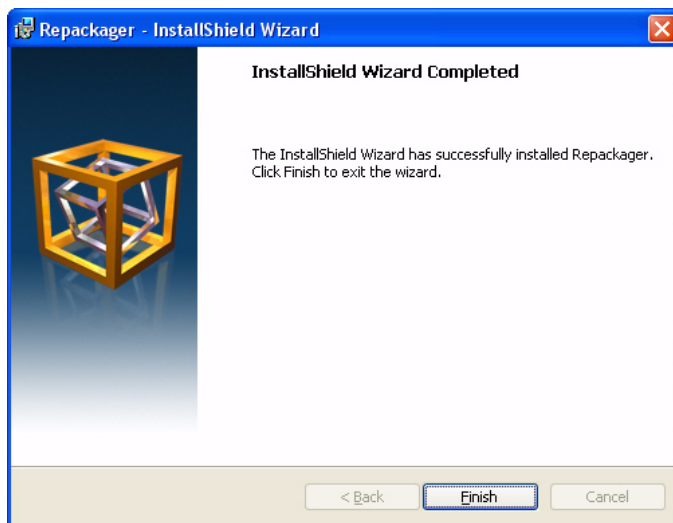
12. Click **Install** to begin the installation process. The **Installing Repackager** panel opens.



Installing Repackager

Installing and Configuring Repackager to Ensure Optimal Installation Capture

When installation is complete, the **InstallShield Wizard Completed** panel opens:



13. Click **Finish** to exit the Wizard.

A Repackager shortcut will be added to the Windows **Start** menu under **AdminStudio, AdminStudio Tools**.

Additional Configuration Steps

If appropriate, consider the following additional configuration steps:

- [Alternate-Language Repackaging on Clean Machines](#)
- [Including the InstallScript Engine With a Windows Installer Package](#)

Alternate-Language Repackaging on Clean Machines

The standalone Repackager setup for clean machines does not install any language resources other than US English. Therefore, if you are Repackaging a setup on a clean system in a language other than in US English, you need to ensure you point to the correct template in the Repackaged Output View.

This can be on a mapped network drive, or you can copy the language-populated template (for example, ISProjBlankTpl.ism) to your clean system from the *AdminStudio Installation Directory*\Editor\Support directory.

Language-specific templates are available when you purchase InstallShield Editor Language Packs.

Including the InstallScript Engine With a Windows Installer Package

Should you need to include the InstallScript engine with your setup, all the major releases of the InstallScript engine are available in the InstallScript_Engines folder on the AdminStudio installation CD. For more information, see the [Update to the Latest InstallShield Installation Engines](#) Knowledge Base article at:

<http://consumer.installshield.com/kb.asp?id=Q108322>

Installing Repackager
Additional Configuration Steps

Index

A

AdminStudio

- client tools installation [5](#)

- installing [5](#)

alternate-language repackaging [15](#)

alternate-language repackaging on clean machines [15](#)

C

clean machines [15](#)

- alternate-language repackaging on [15](#)

I

installing

- AdminStudio [5](#)

R

Repackager [7](#)

- remote repackaging on Windows NT4 [7](#)

repackaging [7](#), [15](#)

- alternate-language [15](#)

- remotely on Windows NT4 [7](#)

Repackaging Wizard [7](#)

- running remotely on Windows NT4 [7](#)

